



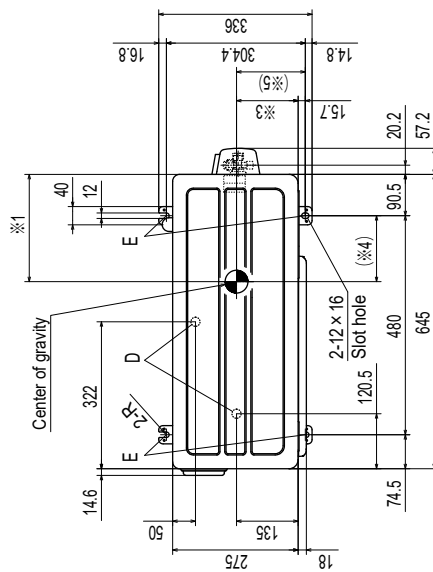
(2) Outdoor units

Models SRC25ZSP-W1, 35ZSP-W1

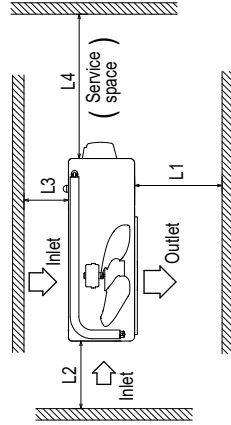
Notes

- (1) The unit must not be surrounded by walls on the four sides.
- (2) The unit must be fixed with anchor bolts.
- (3) An anchor bolt must not protrude more than 15mm.
- (4) If the unit is installed in the location where there is a possibility of strong winds, place the unit such that the direction of air from the outlet gets perpendicular to the wind direction.
- (5) Leave 200mm or more space above the unit.
- (6) The model name label is attached on the right side of the unit.

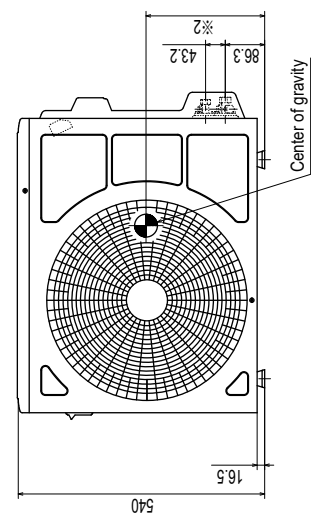
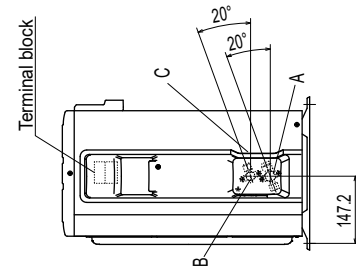
Symbol	Content
A	Service valve connection (gas side) $\phi 9.52 (3/8")$ (Flare)
B	Service valve connection (liquid side) $\phi 6.35 (1/4")$ (Flare)
C	Pipe/cable draw-out hole
D	Drain discharge hole $\phi 20 \times 2$ places
E	Anchor bolt hole M10-12 x 4 places



Dimensions	※1	※2	※3	※4	※5
MODEL	220	260	130	129.5	145.7
SRC25ZSP-W1	220	260	130	129.5	145.7
SRC35ZSP-W1	235	260	135	144.5	150.7



Installation space	Value
L1	280 or more
L2	100 or more
L3	80 or more
L4	250 or more



Unit:mm

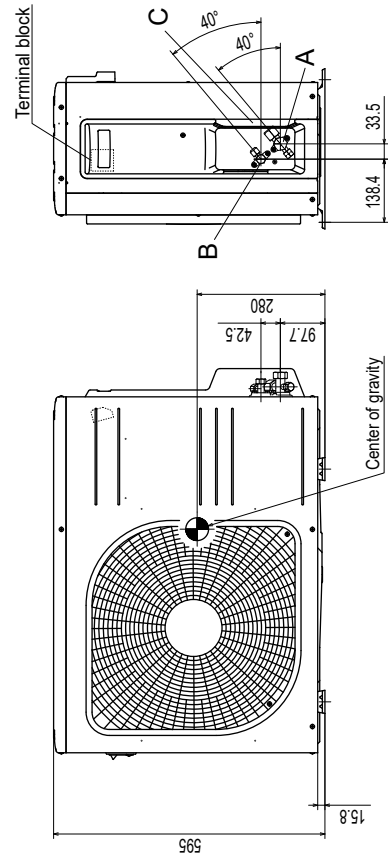
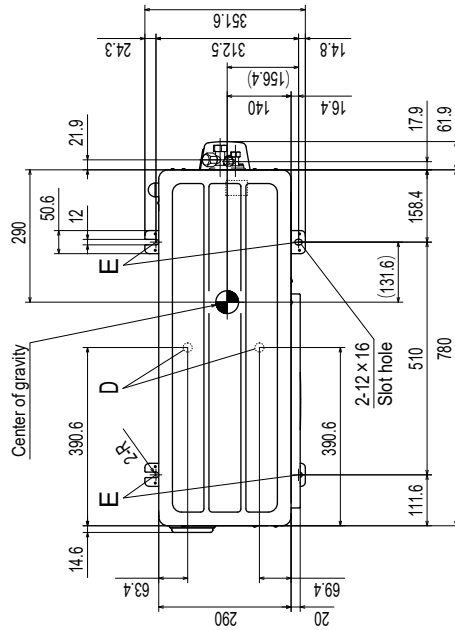
RCW000Z010

Models SRC45ZSP-W1, 50ZSP-W1

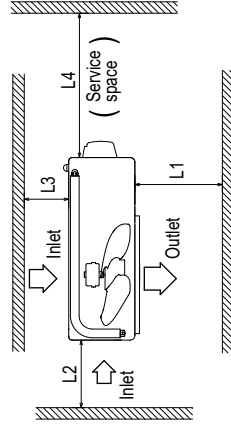
Notes

- (1) The unit must not be surrounded by walls on the four sides.
- (2) The unit must be fixed with anchor bolts.
- (3) An anchor bolt must not protrude more than 15mm.
- (4) If the unit is installed in the location where there is a possibility of strong winds, place the unit such that the direction of air from the outlet gets perpendicular to the wind direction.
- (5) Leave 200mm or more space above the unit.
- (6) The wall height on the outlet side should be 1200mm or less.
- (7) The model name label is attached on the right side of the unit.

Symbol	Content
A	Service valve connection (gas side) $\phi$ 12.7 (1/2") (Flare)
B	Service valve connection (liquid side) $\phi$ 6.35 (1/4") (Flare)
C	Pipe/cable draw-out hole
D	Drain discharge hole $\phi$ 20 x 2 places
E	Anchor bolt hole M10-12 x 4 places



Installation space	Value
L1	280 or more
L2	100 or more
L3	80 or more
L4	250 or more



Unit:mm

(3) Wireless remote control

Unit: mm

